

# Harwich Community Primary

## School and Nursery

Newsletter -Friday 4th April '25

### YEAR 6 BIKEABILITY

This week a group of Year 6 children entered into the Bike ability Programme. They all did a sterling job and the instructors were rather impressed with them. Look what they said to us...

**"The children's behaviour has been excellent and as they are all so good on their bikes."**

### ADVANCED NOTICE ALERT

**Sports day- KS2 am of Tues 24<sup>th</sup> June + KS1 - pm**

**Reserve day - Wed 25<sup>th</sup> June**

**Early Years Sports Day**

**1<sup>st</sup> July- Rec AM and Nursery PM**

### ATTENTION YEAR 6 PARENTS

Please take note that this year's Year 6 SATs test week will take place as follows: -

**Monday 12<sup>th</sup> May- English Grammar, Punctuation and Spelling Test**

**Tuesday 13<sup>th</sup> May - English Reading Test**

**Wednesday 14<sup>th</sup> May - Maths 1 Arithmetic Paper**

**Wednesday 14<sup>th</sup> May - Maths Paper 2 Reasoning Paper**

**Thursday 15<sup>th</sup> May - Maths Paper 3- Reasoning Paper**

*Please ensure that no appointments or holidays are taken during this week.*

*Many thanks*

### DATES FOR YOUR DIARY

Dates	Events
Tue 29 <sup>th</sup> April	Year 1 Parents Phonics Workshop
Tues 6 <sup>th</sup> May	Year 5 and 6 WW1 Simulator

### NON-PUPIL DAYS 2024- 2025

Monday 2<sup>nd</sup> June 2025

Monday 21<sup>st</sup> July 2025

Tuesday 22<sup>nd</sup> July 2025

### LUNCH TIME MENU

We will be on a set menu for the first week back and then we will start on Week 2 of the second week. I will attach to DOJOs today. The menus will also be found on our website too.

### WEEKLY ATTENDANCE

**Reception - 85.7%**

**Year 1 -82.7%**

**Year 2 - 88.4%**

**Year 3 - 96%**

**Year 4 - 86.6%**

**Year 5 - 93.3%**

**Year 6 -93.1%**

**This week's winners are Year 3 with 96%- well done! Whole school attendance is 92.6% this week.**

## STARS OF THE TERM

Let's find out who the stars of the week are here at Harwich Community

Rec- Archie

Y1 - Evie

Y2 - Nellie

Y3 - Kendall

Y4 - Ava N

Y5 - Daisy K

Y6 - Elena



## PE STARS OF THE TERM

Noah- Rec

Rosie- Y2

Lily Ann- Y4

Millie - Y6

## KINDNESS AWARDS

Violet - Year 1

Dexter - Year 1

Millie- Year 6

Lexi H - Year 6

## PRESENTATION AWARDS

This term we are having a big push on the children's handwriting and presentation of work.

Here are the handwriting raffle winners for this term!

Piper

Ava MK

Ellie Rose

Axel



## OUR AMAZING CHOIR

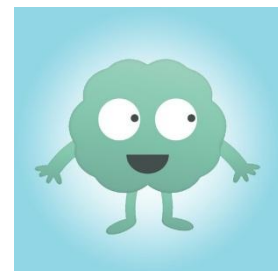
Wow what a fantastic evening we were all treated to the most amazing performers! Our children sang their little hearts and there was not a dry eye in the house. Here

is the link for the video clips of their two songs. So proud of you all.

[Our School Choir | Harwich Community Primary School and Nursery](#)

## MY HAPPY MIND

We also have some really good news to share too. We have been working hard to embed the My Happy Mind programme and we have also been aspiring to receive our bronze award accreditation. We DID it!! Well done everyone involved - this is a huge achievement and shows our drive to improve pupil mental health and wellbeing!



## YEAR 6 FAREWELL DATES

We are really proud of the send off we give our Year 6 children at the end of their time with us. We have now booked in the dates for their Leavers' Events. So book them in your diaries!

Date	Event
Wed 21 <sup>st</sup> May -3:30	Mersea Trip info meeting
Monday 16 <sup>th</sup> - Wednesday 18 <sup>th</sup> June	Mersea Trip
Friday 11 <sup>th</sup> July- 5:30- 7:00pm	Year 6 Prom
Tuesday 15 <sup>th</sup> July @ 1:30pm	Year 6 Show
Wednesday 16 <sup>th</sup> July @ 6pm	Year 6 Show
Friday 18 <sup>th</sup> July @ 9:15am	Year 6 Leavers' Assembly (1 hour approx.)

## MESSAGE FROM ME...

I hope you all have a wonderful Easter break and find time to make memories. Thanks for all your support in all that we do. Amazing set of parents + Fantastic set of children + an outstanding team of staff = Harwich Community Primary School and Nursery- of course!  
Mrs Anderson

